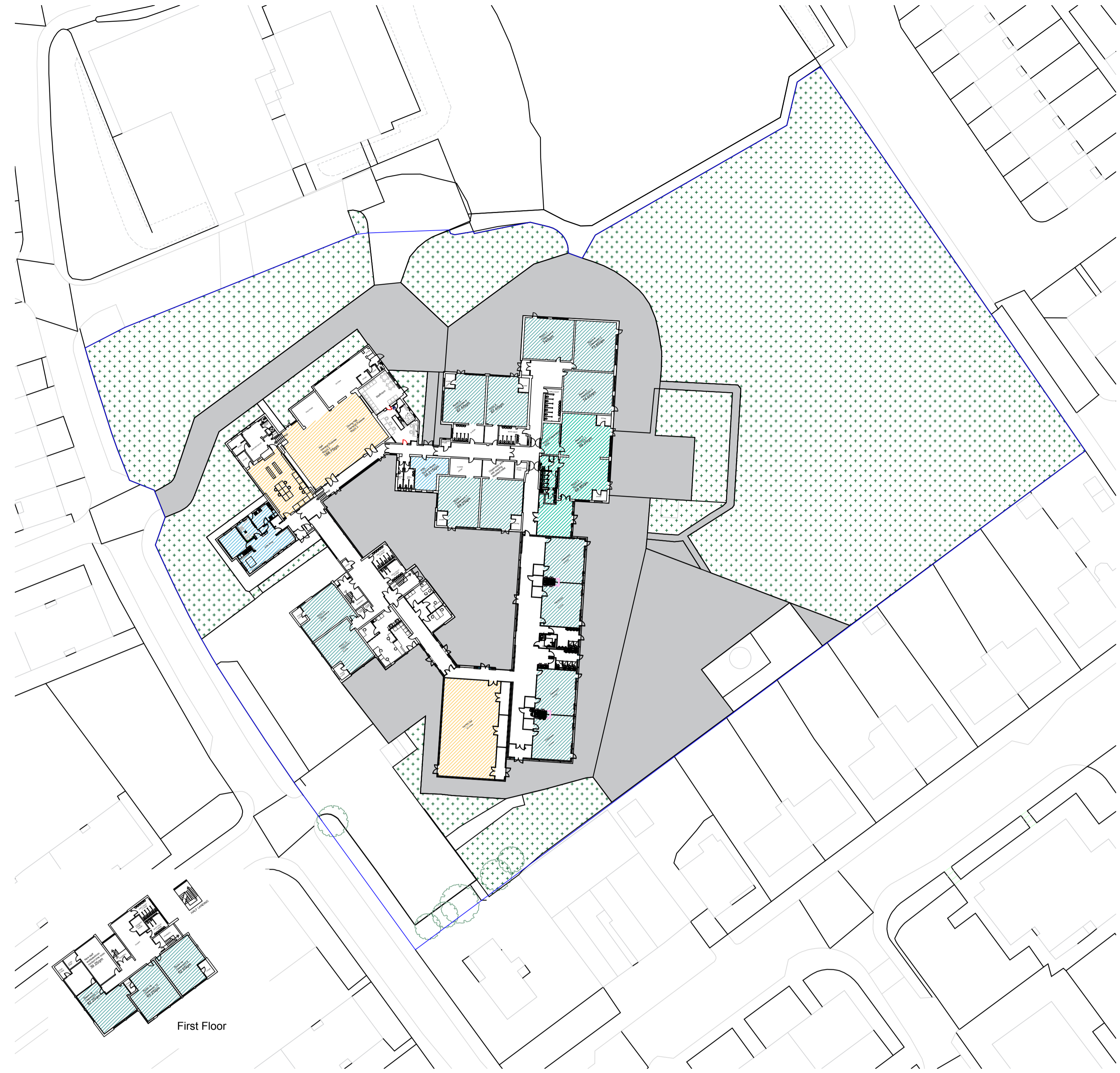


St Peter's R.C. Primary School  
Scale 1:500

Comparison Table			
Riverbank School		St Peter's R.C	
<b>Admin Space</b>			
Entrance/ Waiting Area	15.35m <sup>2</sup>	Entrance vestibule	7.28m <sup>2</sup>
Reception Office	53.73m <sup>2</sup>	Reception Office	10.22m <sup>2</sup>
Head Teachers office	13.59m <sup>2</sup>	Head Teachers/ Deputy Office	22.52m <sup>2</sup>
Deputy Head Teachers Office 1	14.53m <sup>2</sup>		
Deputy Head Teachers Office 2	8.09m <sup>2</sup>		
Staff Room	38.41m <sup>2</sup>	Staff room	24.41m <sup>2</sup>
Janitors Office/ Store/ WC/ Shower room	37.47m <sup>2</sup>	Janitors Office/ WC/ Shower room	10.24m <sup>2</sup>
Non Contact Room	30.75m <sup>2</sup>	Staff Resources	15 m <sup>2</sup>
<b>General Purpose Spaces</b>			
Stage/ library resources (General Purpose Space 1)	84.92m <sup>2</sup>	Library	11 m <sup>2</sup>
Hall (General Purpose Space 2)	156.68m <sup>2</sup>	Quiet Room	7.86m <sup>2</sup>
Dinning Hall (General Purpose Space 3)	62.09m <sup>2</sup>	Piano room	21.8m <sup>2</sup>
Games Hall (General Purpose Space 4)	202.10m <sup>2</sup>	Gymnasium	217.14m <sup>2</sup>
Kitchen	67.70m <sup>2</sup>	Servery	21.55 m <sup>2</sup>
<b>Classrooms</b>			
Classroom 1	63.14m <sup>2</sup>	Classroom 1	62.91m <sup>2</sup>
Classroom 2	63.69m <sup>2</sup>	Classroom 2	39.14m <sup>2</sup>
Classroom 3	62.39m <sup>2</sup>	Classroom 3	62.43m <sup>2</sup>
Classroom 4	62.41m <sup>2</sup>	Classroom 4	61.03m <sup>2</sup>
Classroom 5	74.6m <sup>2</sup>	Classroom 5	73.83m <sup>2</sup>
Classroom 6	73.8m <sup>2</sup>	Classroom 6	47.27 m <sup>2</sup>
Classroom 7	74m <sup>2</sup>	Classroom 7	63.73m <sup>2</sup>
Classroom 8	67.6m <sup>2</sup>	Classroom 8	63.73m <sup>2</sup>
Classroom 9	67.5m <sup>2</sup>	Classroom 1 (OAH)	61.5m <sup>2</sup>
Classroom 10	69.2m <sup>2</sup>	Classroom 2 (OAH)	60.75m <sup>2</sup>
Classroom 11	69.25m <sup>2</sup>	Classroom 3 (OAH)	60.75m <sup>2</sup>
Classroom 12	62.3m <sup>2</sup>		
Classroom 13	63.2m <sup>2</sup>		
Classroom 14	62.6m <sup>2</sup>		

Riverbank School		St Peter's R.C	
<b>Classrooms Cont.</b>			
Classroom 15	63.2m <sup>2</sup>		
Classroom 16	82.2m <sup>2</sup>		
<b>ASN Base</b>			
Support base	97.05m <sup>2</sup>	Music/ Support for Learning	14 m <sup>2</sup>
Nurture Room	35.21m <sup>2</sup>	English as Additional Language Room	8 m <sup>2</sup>
<b>Existing Nursery (Subject to ELC 1140hrs provision)</b>			
		<b>No Nursery Provision</b>	
Nursery Room 1	68.8m <sup>2</sup>		
Nursery Room 2	69.2m <sup>2</sup>		
Snack prep area	19.29m <sup>2</sup>		
Toilets & Changing Facilities	17.59m <sup>2</sup>		
Cloakroom/ Nursery Entrance	46.51m <sup>2</sup>		
Nursery Storage	12.44m <sup>2</sup>		
<b>Misc. Space.</b>			
Cloakrooms	74.2 m <sup>2</sup>	Cloakrooms	32.47 m <sup>2</sup>
Toilets	186.88 m <sup>2</sup>	Toilets	90.83 m <sup>2</sup>
Storage	123.65 m <sup>2</sup>	Storage	114.58 m <sup>2</sup>
<b>External Space</b>			
Soft Landscaping	7536.55 m <sup>2</sup>	Soft Landscaping	95.82m <sup>2</sup>
Hard Landscaping	2932.22m <sup>2</sup>	Hard Landscaping	234.06 m <sup>2</sup>
Car Parking	1037.39 m <sup>2</sup>	Car Parking (Shared)	159.9m <sup>2</sup>
Nursery external space	468.73m <sup>2</sup>		



Riverbank Primary School  
Scale 1:500

- Key**
- General Purpose Space
  - Classrooms
  - ASN
  - Nursery
  - Soft Landscaping
  - Hard Landscaping



Aberdeen City Council | Assets & Finance | Corporate Landlord | Resources  
Marischal College | Broad Street | Aberdeen | AB10 1AB

www.aberdeency.gov.uk | Twitter: @AberdeenCC |  
Facebook.com/AberdeenCC